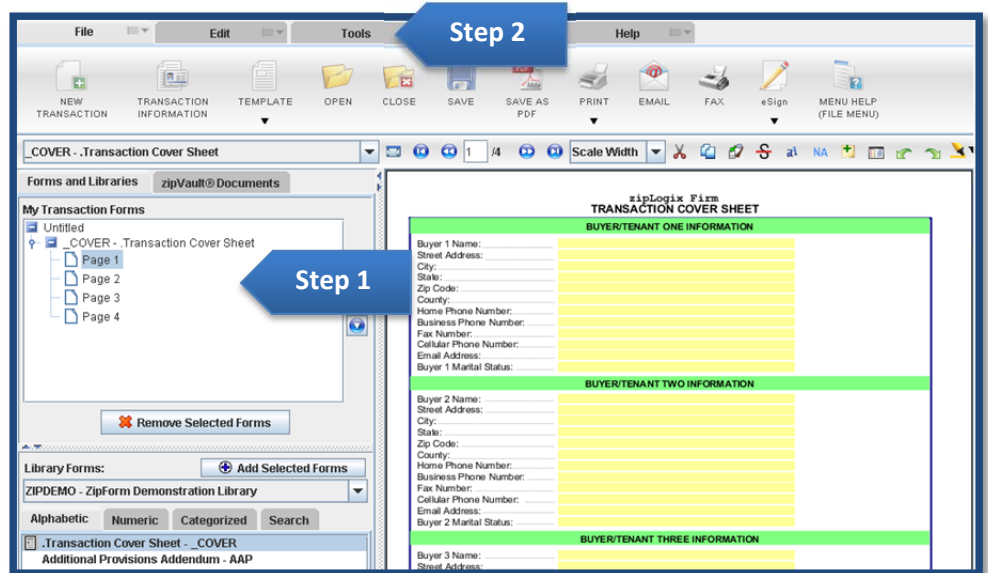


How to use zipFormMLS-Connect®

Import MLS Listing information directly into your zipForm® contracts

Step 1: Open your forms in zipForm®. You can use zipFormMLS-Connect® on a new file, or use it to import information into an existing file. *Protip: Use the Cover Sheet form to save time*

Step 2: Click the **Tools** tab.

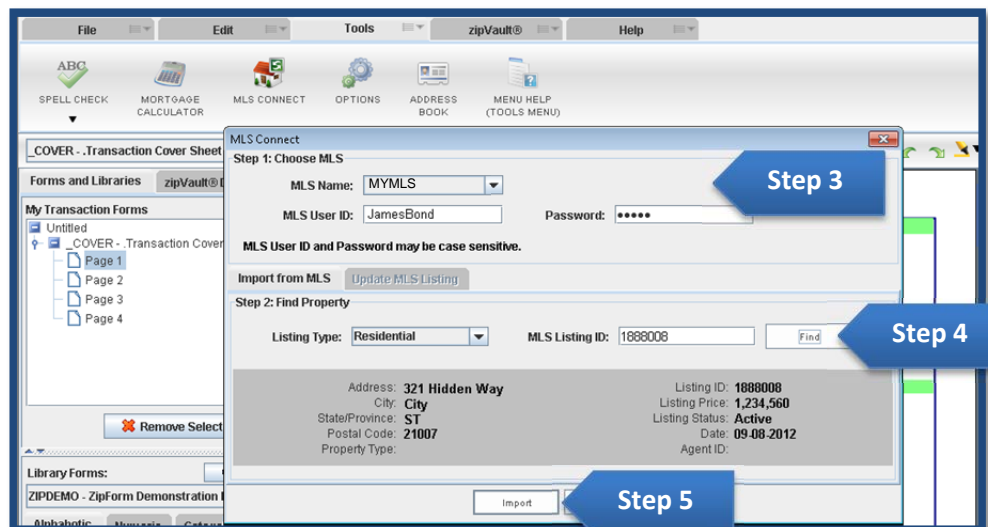


Step 3: Select your **MLS Name** and enter your **MLS User ID** and **Password**, if required

Step 4: Select the **listing type** and enter the **MLS Listing ID**

Step 5: Click **Import**

To import into all of your form fields, click **Yes** when prompted. To import only into blank fields, click **No**



Save time | Increase accuracy | Reduce redundancies

www.zipLogix.com